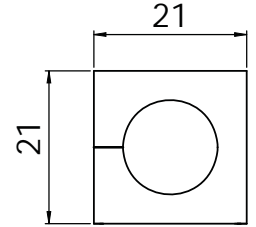


KT

Grommets, small, single



1

Description	Type	Order No gray	Order No black	Clamping range	PU
-------------	------	------------------	-------------------	----------------	----

Product Description

Cable grommets KT small are used with the following cable entry frames:

KEL-U/KEL-ER/KEL (8 - 34) | KVT (38 - 42)

The model range KT small is designed for cable diameters from 2 to 17 mm.

Assembly Note


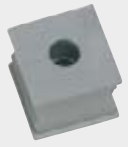

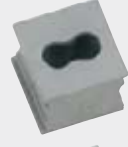



When installing the grommets, the flat side should be facing the middle of the frame. This allows the flat sides of adjacent grommets to match up and provide a secure seal.

Specifications KT gray

Material	Elastomer
Flame class	UL94-Vo
IP rating	KT round, single: up to IP65 (in combination with KEL-ER frame) KT special/blank: IP54
NEMA type rating	up to NEMA type 4X (acc. to UL 50E)
Temperature	- 30°C to + 90°C (static) - 40°F to + 194°F (static)
Properties	Halogen-free, silicone-free

Specifications KT black

Material	Elastomer
Flame class	UL94-HB
IP rating	KT round, single: up to IP65 (in combination with KEL-ER frame) KT special/blank: IP54
NEMA type rating	up to NEMA type 4X (acc. to UL 50E)
Temperature	- 30°C to + 90°C (static) - 40°F to + 194°F (static)
Properties	Higher chemical resistance

BTK		BTK	<input type="checkbox"/> 41251	<input checked="" type="checkbox"/> 41351	Blank grommet	10
KT round		KT 2	<input type="checkbox"/> 39934	<input checked="" type="checkbox"/> 41302	2 - 3 mm	10
		KT 3	<input type="checkbox"/> 41203	<input checked="" type="checkbox"/> 41303	3 - 4 mm	10
		KT 4	<input type="checkbox"/> 41204	<input checked="" type="checkbox"/> 41304	4 - 5 mm	10
		KT 5	<input type="checkbox"/> 41205	<input checked="" type="checkbox"/> 41305	5 - 6 mm	10
		KT 6	<input type="checkbox"/> 41206	<input checked="" type="checkbox"/> 41306	6 - 7 mm	10
		KT 7	<input type="checkbox"/> 41207	<input checked="" type="checkbox"/> 41307	7 - 8 mm	10
		KT 8	<input type="checkbox"/> 41208	<input checked="" type="checkbox"/> 41308	8 - 9 mm	10
		KT 9	<input type="checkbox"/> 41209	<input checked="" type="checkbox"/> 41309	9 - 10 mm	10
		KT 10	<input type="checkbox"/> 41210	<input checked="" type="checkbox"/> 41310	10 - 11 mm	10
		KT 11	<input type="checkbox"/> 41211	<input checked="" type="checkbox"/> 41311	11 - 12 mm	10
		KT 12	<input type="checkbox"/> 41212	<input checked="" type="checkbox"/> 41312	12 - 13 mm	10
		KT 13	<input type="checkbox"/> 41213	<input checked="" type="checkbox"/> 41313	13 - 14 mm	10
		KT 14	<input type="checkbox"/> 41214	<input checked="" type="checkbox"/> 41314	14 - 15 mm	10
		KT 15	<input type="checkbox"/> 41215	<input checked="" type="checkbox"/> 41315	15 - 16 mm	10
		KTs 16	<input type="checkbox"/> 39901	<input checked="" type="checkbox"/> 39912	16 mm	10
		KTs 17	<input type="checkbox"/> 39900	<input checked="" type="checkbox"/> 39913	17 mm	10
		KT oval		KT oval	<input type="checkbox"/> 39930	-
KT S1		KT S1	<input type="checkbox"/> 39931	-		10
KT tele		KT tele	<input type="checkbox"/> 39929	-	Telephone cable	10
KT tele1		KT tele1	<input type="checkbox"/> 41257	-	Data cable RJ12	10
KT tele2		KT tele2	<input type="checkbox"/> 41258	-	Data cable RJ10 / RJ45	10

*Only valid for gray product types

Accessories

ST Plugs 49


KT


Grommets, small, multi



Type	Order No gray	Order No black	Clamping range	PU	Description
------	------------------	-------------------	----------------	----	-------------

KT 2 2	39935	39936	2x \varnothing 2 mm	10	
KT 2 3	39939	39940	2x \varnothing 3 mm	10	
KT 2 4	39906	39907	2x \varnothing 4 mm	10	
KT 2 5	41200	39904	2x \varnothing 5 mm	10	
KT 2 6	41201	39905	2x \varnothing 6 mm	10	
KT 2 7	41202	39916	2x \varnothing 7 mm	10	
KT 2 8	39917	39918	2x \varnothing 8 mm	10	

KT 4 2	39937	39938	4x \varnothing 2 mm	10	
KT 4 3	39914	39915	4x \varnothing 3 mm	10	
KT 4 4	39909	39911	4x \varnothing 4 mm	10	
KT 4 5	39908	39910	4x \varnothing 5 mm	10	
KT 4 6	39932	39933	4x \varnothing 6 mm	10	

KT-ASI	39902	39903	1 ASI-cable	10	
KT-ASI2 l	39922	39924	2 ASI-cables	10	
KT-ASI2 ll	39921	39923	2 ASI-cables	10	

KT ASI2|ll



Product description

Cable grommets KT small are used with the following cable entry frames:

KEL-U/KEL-ER/KEL (8 - 34) | KVT (38 - 42)

The model range KT small is designed for cable diameters from 2 to 17 mm.

Assembly Note

When installing the grommets, the flat side should be facing the middle of the frame. This allows the flat sides of adjacent grommets to match up and provide a secure seal.

Specifications KT gray

Material	Elastomer
Flame class	UL94-Vo
IP rating	KT round, multi: IP54 KT special, multi: IP54
NEMA type rating	NEMA type 12 (acc. to UL 50E)
Temperature	- 40°C to + 90°C (static) - 40°F to + 194°F (static)
Properties	Halogen-free, silicone-free

Specifications KT black

Material	Elastomer
Flame class	UL94-HB
IP rating	KT round, multi: IP54 KT special, multi: IP54
NEMA type rating	NEMA type 12 (acc. to UL 50E)
Temperature	- 30°C to + 90°C (static) - 40°F to + 194°F (static)
Properties	Higher chemical resistance

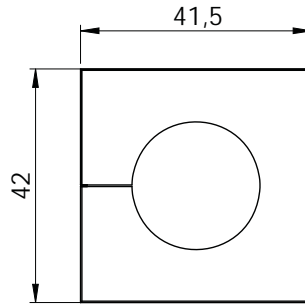
*Only valid for gray product types

KT

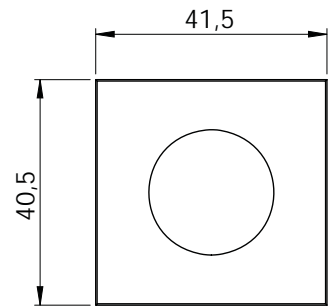
Grommets, large



IP54 IP65



KT / KT-DPF large



KTMB large

1

Product description

Cable grommets KT large accept a wide range of cable diameters from 16 to 35 mm. They are used with the following cable entry frames:

KEL-U/KEL-ER/KEL (8 - 34) | KVT (38 - 42)

ATG adapter grommets provide the possibility to hold a small KT grommet to reduce the clamping range down to 2 mm.

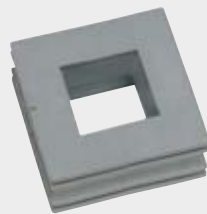

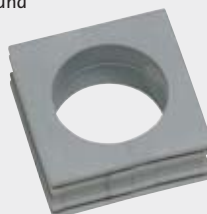
Specifications KT gray

Material: Elastomer
 Flame class: UL94-Vo
 IP rating: KT round, single: up to IP65 (in combination with KEL-ER frame) ATG/BTG: IP54
 NEMA type rating: up to NEMA type 4X (acc. to UL 50E)
 Temperature: -40°C to +90°C (static) -40°F to +194°F (static)
 Properties: Halogen-free, silicone-free

Specifications KT black

Material: Elastomer
 Flame class: UL94-HB
 IP rating: KT round, single: up to IP65 (in combination with KEL-ER frame) ATG/BTG: IP54
 NEMA type rating: up to NEMA type 4X (acc. to UL 50E)
 Temperature: -30°C to +90°C (static) -40°F to +194°F (static)
 Properties: Higher chemical resistance

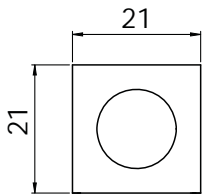
Description	Type	Order No. gray	Order No. black	Clamping range	PU
-------------	------	----------------	-----------------	----------------	----

ATG		ATG	<input type="checkbox"/> 41253 <input checked="" type="checkbox"/> 41353	Adapter grommet	10
BTG		BTG	<input type="checkbox"/> 41252 <input checked="" type="checkbox"/> 41352	Blank grommet or 5 - 20 mm	10
KT round		KT 16	<input type="checkbox"/> 41216 <input checked="" type="checkbox"/> 41316	16 - 17 mm	10
		KT 17	<input type="checkbox"/> 41217 <input checked="" type="checkbox"/> 41317	17 - 18 mm	10
		KT 18	<input type="checkbox"/> 41218 <input checked="" type="checkbox"/> 41318	18 - 19 mm	10
		KT 19	<input type="checkbox"/> 41219 <input checked="" type="checkbox"/> 41319	19 - 20 mm	10
		KT 20	<input type="checkbox"/> 41220 <input checked="" type="checkbox"/> 41320	20 - 21 mm	10
		KT 21	<input type="checkbox"/> 41221 <input checked="" type="checkbox"/> 41321	21 - 22 mm	10
		KT 22	<input type="checkbox"/> 41222 <input checked="" type="checkbox"/> 41322	22 - 23 mm	10
		KT 23	<input type="checkbox"/> 41223 <input checked="" type="checkbox"/> 41323	23 - 24 mm	10
		KT 24	<input type="checkbox"/> 41224 <input checked="" type="checkbox"/> 41324	24 - 25 mm	10
		KT 25	<input type="checkbox"/> 41225 <input checked="" type="checkbox"/> 41325	25 - 26 mm	10
		KT 26	<input type="checkbox"/> 41226 <input checked="" type="checkbox"/> 41326	26 - 27 mm	10
		KT 27	<input type="checkbox"/> 41227 <input checked="" type="checkbox"/> 41327	27 - 28 mm	10
		KT 28	<input type="checkbox"/> 41228 <input checked="" type="checkbox"/> 41328	28 - 29 mm	10
		KT 29	<input type="checkbox"/> 41229 <input checked="" type="checkbox"/> 41329	29 - 30 mm	10
		KT 30	<input type="checkbox"/> 41230 <input checked="" type="checkbox"/> 41330	30 - 31 mm	10
		KT 31	<input type="checkbox"/> 41231 <input checked="" type="checkbox"/> 41331	31 - 32 mm	10
		KT 32	<input type="checkbox"/> 41232 <input checked="" type="checkbox"/> 41332	32 - 33 mm	10
		KT 33	<input type="checkbox"/> 41233 <input checked="" type="checkbox"/> 41333	33 - 34 mm	10
		KT 34	<input type="checkbox"/> 41234 <input checked="" type="checkbox"/> 41334	34 - 35 mm	10

*Only valid for gray product types

KT-DPF | KTMB

Grommets, Multi-Range





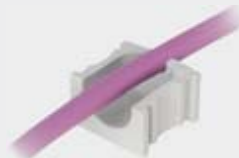


KT-DPF / KTMB small



KT-DPF-B



Type	Order No.	Size KT	Clamping range	PU	Description
------	-----------	------------	----------------	----	-------------

KT-DPF-A	<input type="checkbox"/> 41260 <input type="checkbox"/> 41360	KT small	3 - 12 mm	10	 <p>KT-DPF-A</p>
KT-DPF-B	<input type="checkbox"/> 41261 <input type="checkbox"/> 41361	KT large	4 - 18 mm	10	
KT-DPF-C	<input type="checkbox"/> 41262 <input type="checkbox"/> 41362	KT large	14 - 26 mm	10	 <p>KT-DPF-C</p>
KTMB-A	41432	KT small	2.5 - 6.5 mm	10	
KTMB-B	41434	KT small	4 - 7.5 mm	10	 <p>KTMB-D</p>
KTMB-C	41436	KT small	6.5 - 10 mm	10	
KTMB-D	41438	KT small	9.5 - 13 mm	10	
KTMB-E	41440	KT small	13 - 16 mm	10	 <p>Cross section KTMB</p>
KTMB-G	41460	KT large	13 - 18 mm	10	
KTMB-H	41465	KT large	18 - 23 mm	10	
KTMB-I	41470	KT large	23 - 28 mm	10	 <p>KTMB-I</p>
KTMB-J	41475	KT large	28 - 33 mm	10	
KTMB-K	41480	KT large	2x 13 - 18 mm	10	 <p>KTMB-K</p>

*Only valid for gray product types

Product description

The KT-DPF / KTMB grommets accept a wide range of cable diameters. A great benefit when the exact cable diameter is not known in advance. The KTMB grommets are not split and therefore only usable for cables without connectors. Cutting of KT-DPF grommets: Cable diameter less 20%.

Specifications gray

Material	Elastomer
Flame class	UL94-Vo
IP rating	IP54
NEMA type rating	NEMA type 12 (acc. to UL 50E)
Temperature	- 40°C to + 90°C (static) - 40°F to + 194°F (static)
Properties	Halogen-free, silicone-free

Specifications black

Material	Elastomer
Flame class	UL94-HB
IP rating	IP54
NEMA type rating	NEMA type 12 (acc. to UL 50E)
Temperature	- 30°C to + 90°C (static) - 40°F to + 194°F (static)
Properties	Higher chemical resistance

KMS Cable template

The correct size of the KT grommets can easily be determined by using the stainless steel cable template.

- Determining the diameter of the cable
- Selecting the KT grommets according
- to the data on the cable template

Order No. 39800



DT

Membrane Cable Grommets



1

Product Description

The DT cable grommets are designed for cables without preassembled connectors. A large number of cables can be routed utilizing minimal space.

DT grommets are designed to fit in KT large grommet spaces of the following products:

KEL-U/KEL-ER/KEL (8 - 34) | KVT (38 - 42)

The DT grommets are also perfectly suitable for the assembly of subsequently terminated cable harnesses.

Advantages & Benefits

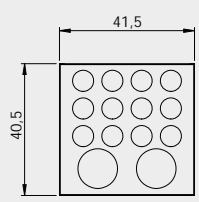
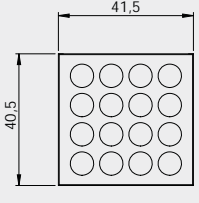
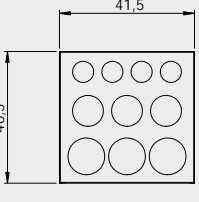
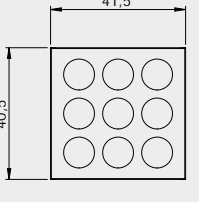
- Combination of routing pre-terminated cables and cables without connectors with one cable entry frame
- Enables subassembly of cable harnesses
- High cable density

Specifications

Material	Elastomer
Flame class	UL94-Vo
IP rating	IP54
NEMA type rating	NEMA type 12 (acc. to UL 50E)
Temperature	- 40°C to + 90°C (static) - 40°F to + 194°F (static)
Properties	Halogen-free, silicone-free

Accessories

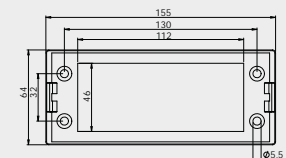
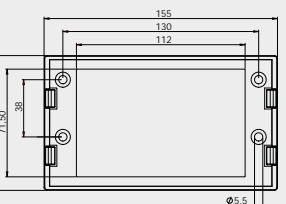
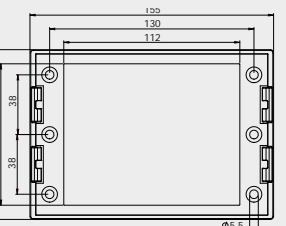
ST-B Plugs 76

Description	Type	Order No.	Number of cables	PU
	DT 1	41500	12× max. 6.5 mm 2× max. 12.2 mm	10
	DT 2	41510	16× max. 7.1 mm	10
	DT 3	41520	4× max. 6.5 mm 3× max. 9.5 mm 3× max. 11.3 mm	10
	DT 4	41530	9× max. 9.5 mm	10

KEL-SNAP Mounting Frames



Type	Order No.	Fits for	Cut-out [mm]	PU	Description
------	-----------	----------	--------------	----	-------------

KEL-SNAP 24	42042	KEL 24 KEL-U 24 KEL-FG A KEL-QUICK 24	46 × 112	10	
KEL-SNAP 24-E	42044	KEL 24-E	71 × 112	1	
KEL-SNAP 24-MT	42046	KEL 24-MT	89 × 112	1	

Specifications

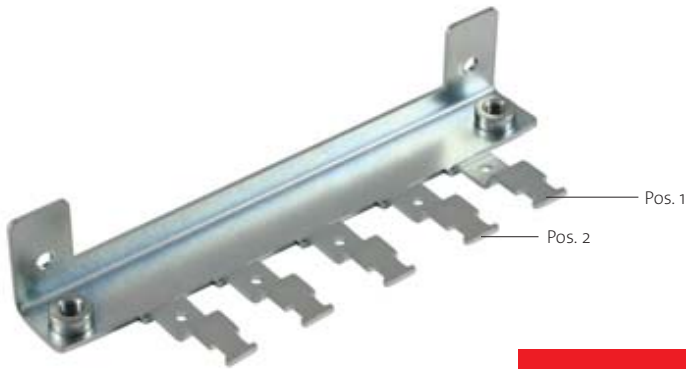
Material	Polyamide (PA)
Flame class	UL94-Vo
IP rating	IP54 (certified acc. to EN 60529)
NEMA type rating	NEMA type 12 (acc. to UL 50E)
Temperature	- 40°C to + 140°C (static) - 40°F to + 284°F (static)
Properties	Halogen-free, silicone-free
Cut-out dimensions	See Page 192 - 193

Accessories

KEL Cable entry frames	18 - 24
KEL-U Cable entry frames	8 - 14
KEL-QUICK Cable entry frames	50 - 51
MP Module plates	148 - 149
BPK-SNAP Blank plates	160

KEL-EMC-Z

Grounding Mount with Strain Relief



Type	Order No.	No. of teeth	Fastening	Fits with	PU
------	-----------	--------------	-----------	-----------	----

KEL-EMC-Z 16 4	36525	4	long side	KEL-E4 KEL 16 x KEL-U 16 x KEL-ER 16 x KEL-QUICK 16	1
KEL-EMC-Z 24 5	36527	5	long side	KEL-E5 KEL 24 x KEL-U 24 x KEL-ER 24 x KEL-QUICK 24	1

Product Description

Cable entry, EMC shielding and strain relief – all in one location!

Cables pass through the KEL cable entry and insert directly to the EMC clamps and strain relief.

Simply insert the cable shield into the shield clamp and secure the cable jacket to the strain relief. Two separate functions acc. to regulations – carried out quickly and easily!

Custom configurations are available for shield clamps up to 16 mm in diameter with minimal order quantities and lead time.

Advantages & Benefits

- Large surface contact between cable shield and housing, especially on conductive coated surfaces
- Sealing by outer cable jacket – EMC shielding by cable shield (in acc. with regulations)
- Combined routing and fastening with the KEL cable entry system
- Available without SKL shield clamps if only additional strain relief is required
- Mounting hole for ground strap or PE connection

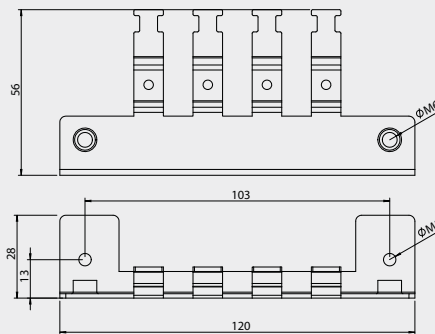
Specifications

Material Carbon steel, zinc plated

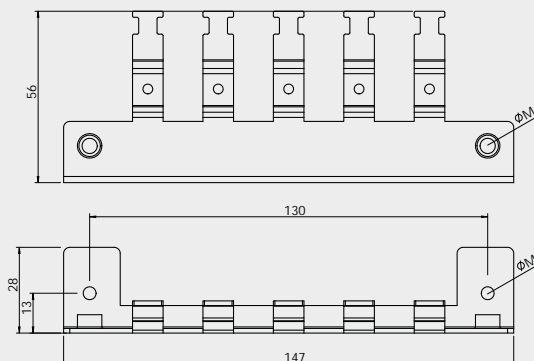
Compatible with

KEL-U Cable entry frames	8 - 14
KEL-ER Cable entry frames	9 - 17
KEL Cable entry frames	16 - 27
KEL-QUICK Cable entry frames	50 - 51

KEL-EMC-Z 16|4

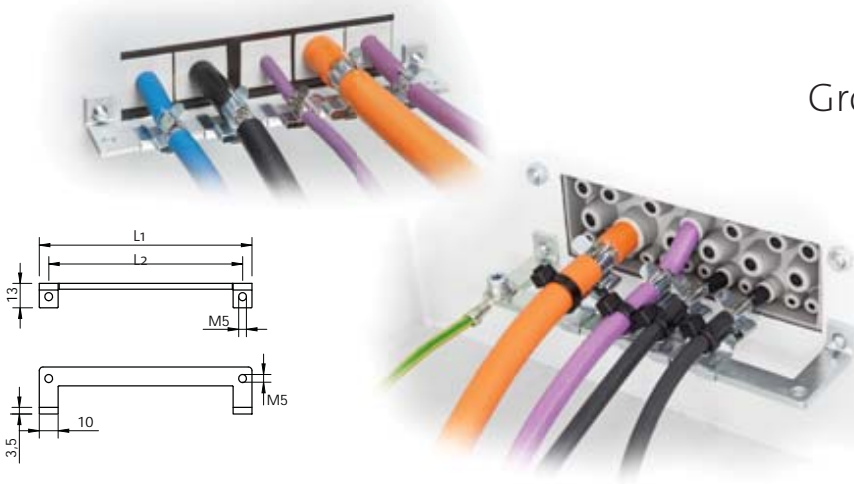


KEL-EMC-Z 24|5



KEL-EMC-PF

Grounding Mount, Bracket Version



Type	Fits with	Order No.	Length L1	Length L2	PU
KEL-EMC-PF B4	KEL-E2 KEL-B KEL-U-B KEL-ER-B	39150	68 mm	58 mm	1
KEL-EMC-PF 10	KEL-E3 KEL 10 x KEL-U 10 x KEL-ER 10 x	39160	93 mm	83 mm	1
KEL-EMC-PF 16	KEL-E4 KEL 16 x KEL-U 16 x KEL-ER 16 x	39170	113 mm	103 mm	1
KEL-EMC-PF 24	KEL-E5 KEL 24 x KEL-U 24 x KEL-ER 24 x KEL-DPZ 24 x KEL-DPZ-E	39180	140 mm	130 mm	1

Product Description

The EMC bracket combined with the matching PFS|SKL EMC shield clamp is perfect in conjunction with the KEL cable entry frame for alleviating interferences due to shields.

The EMC clamp is assembled inside the control panel. For this process the same fixing screws for the assembly of the KEL frame on the control panel are used. A female screw thread M5 is already integrated in the KEL-EMC-PF bracket.

Depending on the cable diameter, the corresponding PFS|SKL EMC shield clamp can be snapped onto the EMC bracket.

Advantages & Benefits

- Supports a wide range of cable and wire sizes
- Large surface contact of the cable shield
- Permanent spring pressure on the cable shield
- Fast and easy assembly

Specifications

Material Carbon steel, galvanically zinc plated

Compatible with

KEL-U Cable entry frames	8 - 14
KEL-ER Cable entry frames	9 - 17
KEL Cable entry frames	16 - 27
KEL-QUICK Cable entry frames	50 - 51
KEL-BES Brush frames	57
KEL-DPU Cable entry plates	62 - 63
KEL-DPZ Cable entry plates	64 - 67
PFSZ SKL Shield clamps	100
PFS SKL Shield clamps	101

KEL-EMC

Grounding Mount



Product Description

Installation of pre-terminated cables without shield interruption.

Advantages & Benefits

- Direct, easy and quick contact to the enclosure
- Space saving, usable for up to 10 cables with the two row model
- Replacement for EMC cable glands, even for pre-terminated cables
- Low resistance shield contact

Specifications

Material **Stainless steel**

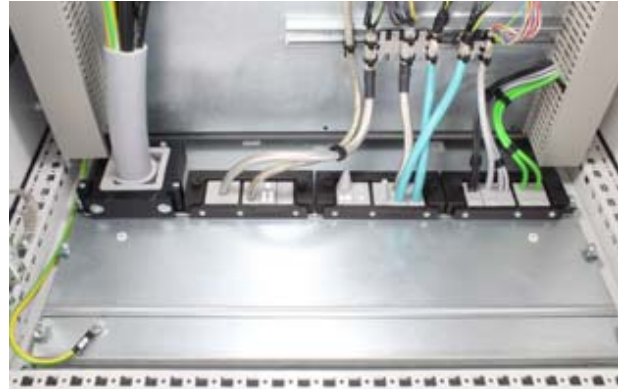
Compatible with

KEL-U Cable entry frames	8 - 14
KEL-ER Cable entry frames	9 - 17
KEL Cable entry frames	16 - 27
KEL-QUICK Cable entry frames	50 - 51

Type	Order No.	No. of teeth	Fastening	Fits with	PU
KEL-EMC-B	36520	2	long side	KEL-E2 KEL(-U)-B x KEL-ER-B x KEL-QUICK-B2 B4	5
KEL-EMC 10	36522	3	long side	KEL-E3 KEL(-U) 10 x KEL-ER 10 x	5
KEL-EMC 16 4	36524	4	long side	KEL-E4 KEL(-U) 16 x KEL-ER 16 x KEL-QUICK 16	5
KEL-EMC 24 5	36526	5	long side	KEL-E5 KEL(-U) 24 x KEL-ER 24 x KEL-QUICK 24	5
KEL-EMC F	39110	3	narrow side	KEL(-U)-B x KEL-ER-B x KEL(-U) 10 x KEL-ER 10 x KEL(-U) 16 x KEL-ER 16 x KEL(-U) 24 x KEL-ER 24 x	5

KDR-ESR

Enclosure Base Plate with Slide Frames



KDR-ESR Assembly

Product Description

The KDR-ESR is a one-piece plate to be assembled on enclosure bases. Slide frames for the KEL cable entry frames are already preassembled.

After installing all cables into the KEL frames, they are easily and quickly inserted into the slide frames and fixed. During maintenance, the KEL frames are removed without tools from the slide frames. Due to the combination KDR-ESR and KEL cable entry frames, a rating of IP54 is achieved (with correct selection of cable grommets). Slide frames which are no longer required, are closed with BPK-SNAP Blank plates.

Advantages & Benefits

- Easy assembly and removal
- During assembly, almost the complete base of the enclosure can be used for installation of cables
- Even large connectors can be installed easily
- The base plate KDR-ESR is designed for Rittal enclosures TS8. Other sizes can be supplied on request
- No additional sheet metal work required
- Retrofitting possible without disconnecting cables. Everything can be built around the cables

Specifications

Material	Base plate: Carbon steel, zinc-plated KDR-ESR Frame: Polyamide (PA)
Flame class	UL94-Vo, self-extinguishing
IP rating	IP54, with gasket and correct selection of the cable grommets
Temperature Properties	- 40°C to + 90°C (static) Halogen free, silicone free

Compatible with

KEL(-U) 16 / 24 Cable entry frames	8 - 19
KEL-JUMBO Cable entry frames	34
BPK-SNAP 16 / 24 Blank plates	160



1

The base plate is fixed in the enclosure base. The KEL cable entry frames are fitted.



2

The KEL cable entry frames are screwed together after fitting.



3

Afterwards the KEL frames are pushed into the Slide frames and fixed with the knurled screws.

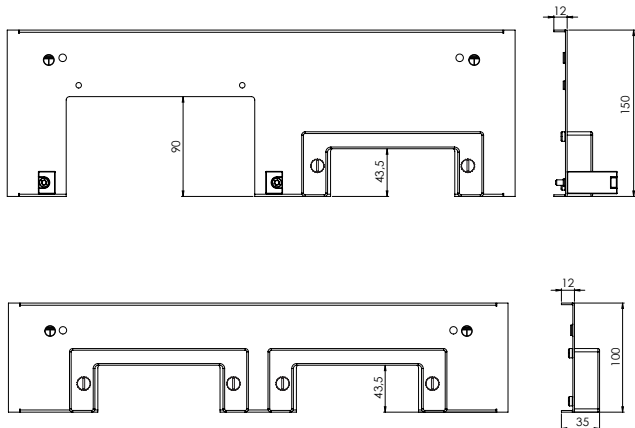


4

Finally, the middle base plate which is part of the standard enclosure, moves together with the KDR-ESR plates.

KDR-ESR

Enclosure Base Plate with Slide Frames



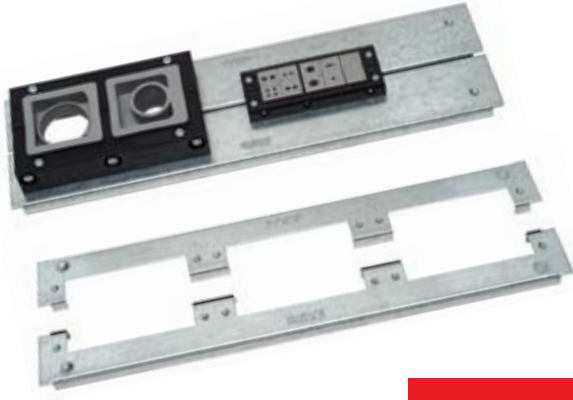
Sealing tape
Order No. 42999 (PU: 1 m)

Enclosure type	Enclosure width	Total length base plate	Sight size of base plate opening	No. of possible cable entries				Order No.
				JUMBO 1	JUMBO 2	KEL(-U) 16 ...	KEL(-U) 24 ...	
TS8	600 mm	458 mm	435 mm	-	-	-	2	43079
	600 mm	458 mm	435 mm	-	1	-	1	43070
	600 mm	458 mm	435 mm	1	-	2	-	43071
TS8	800 mm	658 mm	635 mm	-	-	1	3	43080
	800 mm	658 mm	635 mm	1	-	-	3	43072
	800 mm	658 mm	635 mm	-	1	-	2	43073
TS8	1000 mm without division bar	858 mm	835 mm	-	-	-	5	43081
	1000 mm without division bar	858 mm	835 mm	1	-	-	4	43074
	1000 mm without division bar	858 mm	835 mm	-	1	-	3	43075
TS8	1000 mm* with division bar	420 mm	398 mm	-	-	-	2	43082
	1000 mm* with division bar	420 mm	398 mm	1	-	-	1	43076
	1000 mm* with division bar	420 mm	398 mm	-	1	-	1	43077
TS8	1200 mm*	518 mm	495 mm	-	-	-	3	43083
	1200 mm*	518 mm	495 mm	1	-	-	2	43078
	1200 mm*	518 mm	495 mm	-	1	-	1	43084

* in case both fields of the enclosure are equipped, 2 complete base plates are necessary.

KDR 2

Split Enclosure Base Plates



KDR 2 Assembly

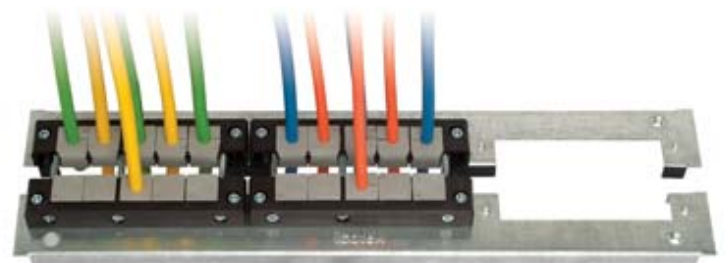
Product Description

Split, 2-part base plates KDR 2 with pre-cut holes for KEL and KEL-JUMBO cable entry systems.

Integrated screw holes provide quick and easy installation of KEL frames.

Advantages & Benefits

- During assembly, almost the complete base of the enclosure can be used for installation of cables
- Even large connectors can be installed easily
- The base plate KDR 2 is designed for Rittal enclosures TS8. Other sizes can be supplied on request
- Retrofitting is possible without disconnecting of cables. All can be installed around the cables.
- No additional sheet metal work required
- Cut-outs, which are no longer required, are covered with metal blank plates Type BPM



When the cable entry frames are assembled, the KDR base plates move together for a tight, secure hold of the cable entry systems.



The frame parts with grommets have to be built up before final assembly, i.e. before screwing the system together.

Screwing of the cable entry frames tightens both parts of the split base plate.

Specifications

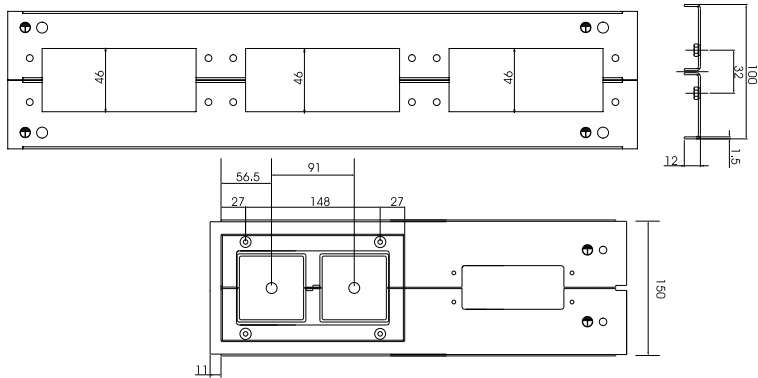
Material **Carbon steel, zinc-plated**

Compatible with

KEL 24 Cable entry frames	18
KEL-JUMBO Cable entry frames	34
BPM Blank plates metal	159

KDR 2

Split Enclosure Base Plates



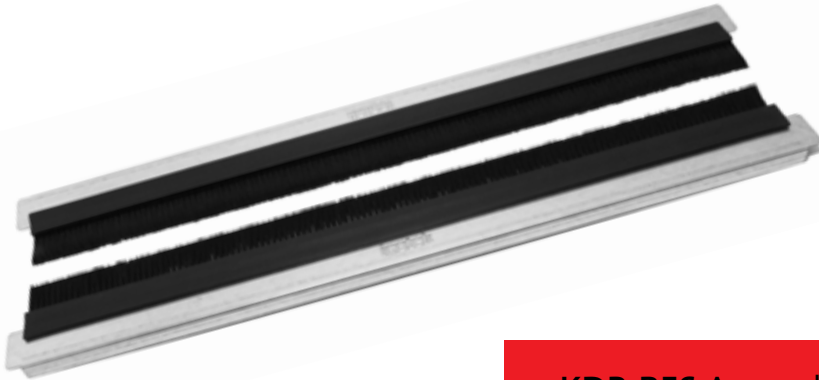
Sealing tape
Order No. 42999 (PU: 1 m)

Enclosure type	Enclosure width	Total length base plate	Sight size of base plate opening	No. of possible cable entries			Order No.
				JUMBO 1	JUMBO 2	KEL 24 ...	
TS 8	600 mm	458 mm	435 mm	-	-	3	42924
				1	-	2	42953
				-	1	1	42941
TS 8	800 mm	658 mm	635 mm	-	-	4	42922
				1	-	3	42954
				-	1	2	42945
TS 8	1000 mm without division bar	858 mm	835 mm	-	-	5	42923
				1	-	4	42955
				-	1	3	42952
TS 8	1000 mm* with division bar	420 mm	398 mm	-	-	2	42958
				1	-	1	42957
				-	1	1	42959
TS 8	1200 mm*	518 mm	495 mm	-	-	3	42920
				1	-	2	42956
				-	1	1	42943

* in case both fields of the control panel are equipped, 2 complete split base plates are necessary.

KDR-BES

Enclosure Base Plate with Brush Grommets



For standard cut-outs:
KEL-BES - see page 57

KDR-BES Assembly

Product Description

The new 2-piece enclosure base plates KDR-BES are supplied with preassembled brush grommets.

The base plates are installed with standard Rittal clips.

Depending on the maximum cable diameter to be routed, the 2 halves of the brush base plate are aligned further or closer to each other.

The base plates KDR-BES are perfect for protection of the enclosure interiors against rough dirt.

Advantages & Benefits

- During assembly, almost the complete base of the enclosure can be used for installation of cables.
- Retrofitting possible without disconnecting cables. Everything can be built around the cables.
- The base plates KDR-BES are designed for Rittal enclosures TS8. Other sizes can be supplied on request.

Specifications

Material	Base plate: Sheet steel, zinc-plated Brush grommets: Polyamide (PA)
Temperature Properties	- 20°C to + 90°C (static) Halogen free, silicone free

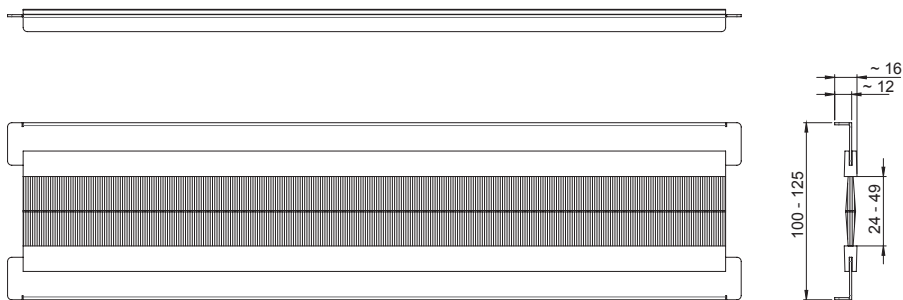
Accessories

ZL Strain relief plates 82 - 86



KDR-BES

Enclosure Base Plate with Brush Grommets



Type	Enclosure type	Enclosure width	Total length base plate	Sight size of base plate opening	Order No.
KDR-BES-TS8-600	TS8	600 mm	458 mm	435 mm	58000
KDR-BES-TS8-800	TS8	800 mm	658 mm	635 mm	58006
KDR-BES-TS8-1000	TS8	1000 mm without division bar	858 mm	835 mm	58012
KDR-BES-TS8-1200	TS8	1200 mm*	518 mm	495 mm	58018

* in case both fields of the enclosure are equipped, 2 complete base plates are necessary.

MP

Module Plates



MP Applications

Product Description

The module plates have cut-outs for fixing the KEL range cable entry systems KEL 24, KEL-U 24, KEL-JUMBO, KEL-DPF, KEL-JUMBO flex and KEL-ULTRA flex.

The module plates can be fixed on:

- Separation walls by Rittal
- closed enclosure bases and roofs (various manufacturers)
- Bases of Lohmeier enclosures
- Bases of Rittal enclosures via KDR-BMP base plates

The module blank plate without cut-outs (Order No. 43882) is designed for closing unused cut-outs. This module plate can even be used for self-made cut-outs.

Module plates are supplied with a gasket.



Cable routing via module plates in the base of a Rittal TS 8 enclosure. Mounting with icotek base plate KDR BMP.



Cable routing through the divider panel of a Rittal TS8 baying enclosure system via module plates.



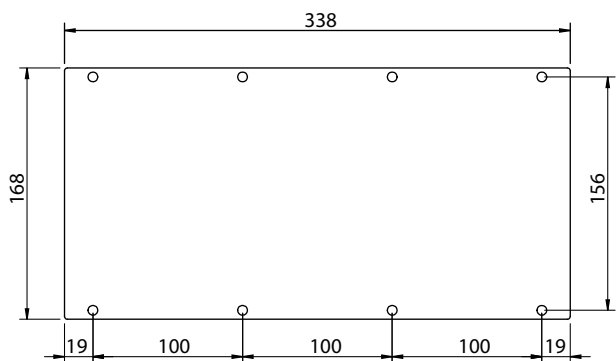
Routing of several cables with and without connectors through a closed enclosure roof via module plates. Cut-out size 314 x 144 mm.



Routing of a rigid supply line through a closed enclosure roof via module plates. Cut-out size 314 x 144 mm.

MP

Module Plates



Description	Type	Order No.	Compatible with
-------------	------	-----------	-----------------

	MP 0	43882	Module plate, blank
	MP 1	43891	3x KEL(-U) 24 x
	MP 2	43890	4x KEL(-U) 24 x
	MP 3	43886	1x KEL-JUMBO 1 1x KEL-JUMBO 2
	MP 4	43888	2x KEL-JUMBO 1
	MP 5	43887	2x KEL(-U) 24 x 1x KEL-JUMBO 1
	MP 6	43883	5x cut-out M50 for KEL-DPF or KEL-DPZ
	MP 7	43889	Cut-out 3x KEL-JUMBO flex
	MP 8	43894	Cut-out 2x KEL-ULTRA flex

Specifications

Material Carbon steel, zinc-plated
Aluminum (Order No. 43883)
Dimension 338 x 168 x 2 mm

Compatible with

KEL 24 Cable entry frames 18
KEL-U 24 Cable entry frames 8
KEL-SNAP snap frames 36 - 37
KEL-JUMBO Cable entry frames 34
KEL-DPF Cable entry grommets 77
KEL-JUMBO flex Cable entry ins. 78
KEL-ULTRA flex Cable entry ins. 79
Blank plates 158 - 160

KDR-BMP

Enclosure Base Plates for Module Plates



Product description

The KDR-BMP base plates are ideally suited for Rittal TS enclosures and can be used instead of the 3 piece standard clips base plates. Rittal standard mounting clips are used for fixing the plate.

On KDR-BMP base plates, our MP Module Plates MP0-MP8 can be easily mounted and used for installation of cable entry components.

Advantages & Benefits

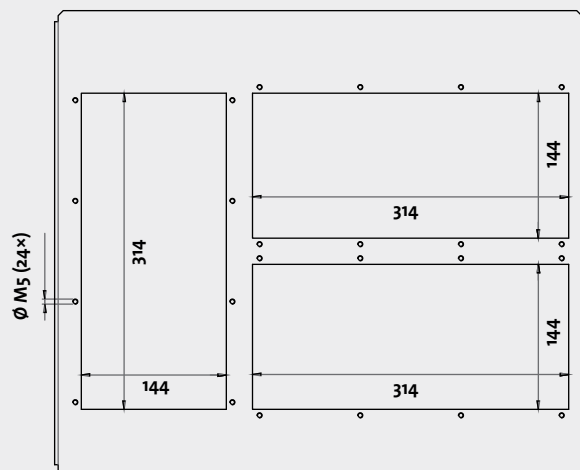
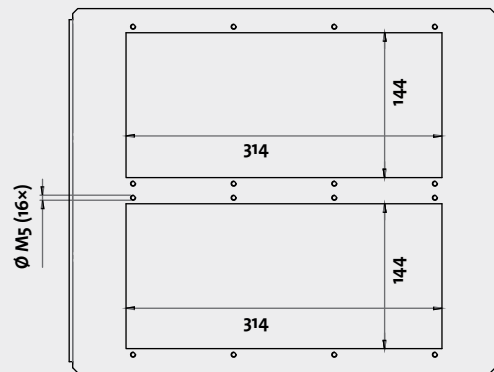
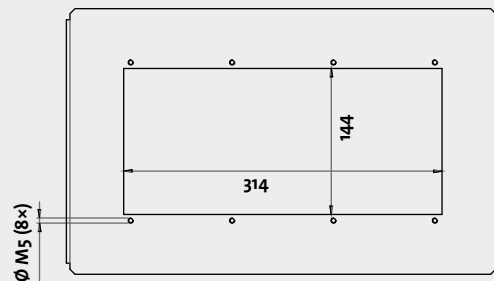
- Very simple mounting
- No sheet metal work required

Specifications

Material	Sheet steel, zinc-plated
IP rating	IP54, with gasket and correct selection of cable entry devices

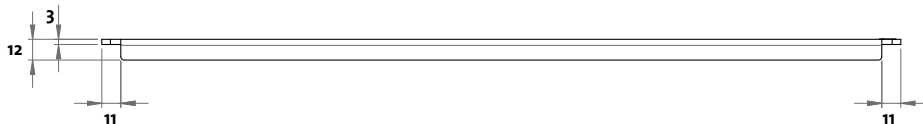
Compatible with

MP Module plates 148 - 149



KDR-BMP

Enclosure Base Plates for Module Plates



Type	Enclosure type	Enclosure width	Enclosure depth	No. of cut-outs for module plates	Order No.
KDR-BMP 600/400	TS8	600 mm	400 mm	1	43300
KDR-BMP 600/500		600 mm	500 mm	2	43302
KDR-BMP 600/600		600 mm	600 mm	2	43304
KDR-BMP 800/400	TS8	800 mm	400 mm	1	43306
KDR-BMP 800/500		800 mm	500 mm	3	43308
KDR-BMP 800/600		800 mm	600 mm	3	43310
KDR-BMP 1000/400	TS8	1000 mm with division bar	400 mm	1	43312
KDR-BMP 1000/500		1000 mm with division bar	500 mm	2	43314
KDR-BMP 1000/600		1000 mm with division bar	600 mm	2	43316
KDR-BMP 1200/400	TS8	1200 mm with division bar	400 mm	1	43318
KDR-BMP 1200/500		1200 mm with division bar	500 mm	2 × 3	43320
KDR-BMP 1200/600 for left section		1200 mm with division bar	600 mm	3	43322
KDR-BMP 1200/600 for right section		1200 mm with division bar	600 mm	3	43324

* in case both fields of the enclosure are equipped, 2 complete base plates are necessary.

FP-AE

Flanged Plates for Compact Enclosures



Description

Product Description

We supply complete flanged plates FP with 112 × 36 mm cut-outs for compact enclosures of the AE series. The cut-outs, as well as the drilling template, conform to the standard cut-outs for 24-pole industrial connectors.

All flanged plates are RAL 7035 powder-coated. Please use the gaskets of the standard plates. Enclosures are supplied with gaskets and screws.

We recommend fastening the cable entry systems with a torque of 1.5 - 2.0 Nm.

Advantages & Benefits

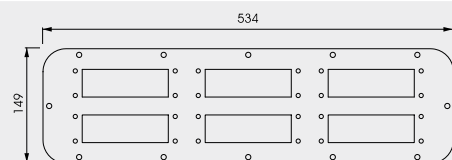
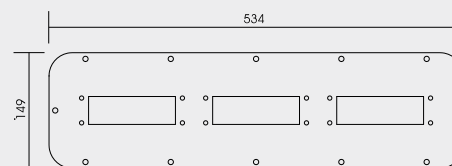
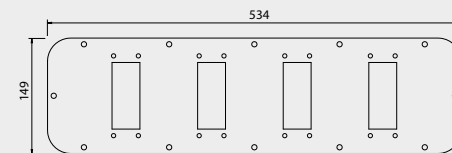
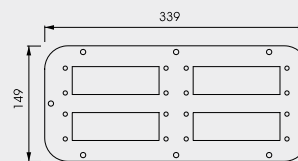
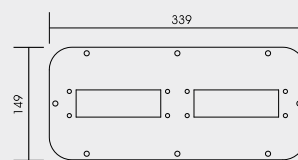
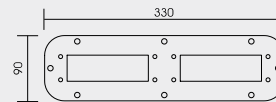
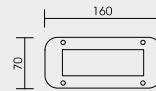
- No expensive extra sheet metal work is required
- High cable density is achieved by using KEL, KEL-U, KEL-DPZ or KEL-DP
- Reduce labor costs by using cable entry systems KEL, KEL-U, KEL-DPZ or KEL-DP compared to the assembly of conventional cable glands

Specifications

Material **Carbon steel, powder coated**

Compatible with

KEL Cable entry frames	18 - 19
KEL-U Cable entry frames	8 - 10
KEL-SNAP Mounting frames	36 - 37
KEL-QTA 24 Cable entry frames	54 - 55
KEL-DPU 24 Cable entry plates	62 - 63
KEL-DPZ 24 Cable entry plates	64 - 65
KEL-DP 24 Cable entry plates	72
Blank plates	158 - 159



FP-AE

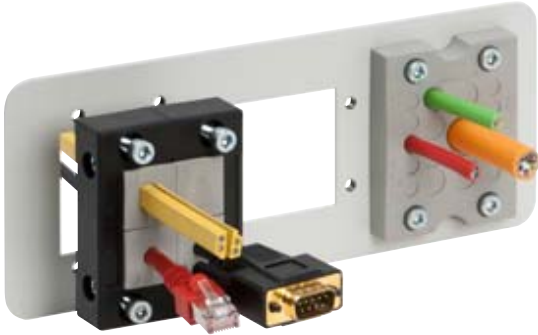
Flanged Plates for Compact Enclosures



Type	Order No. RAL 7035	Compatible with: (Product Group 1)	Compatible with: (Product Group 2)	Size FP	Compatible with (e.g. for Rittal)
FP-AE 160 70 with 1 cut-out 36 x 112 mm	43836	KEL-QTA 24	KEL-DP 24	1	AE 1032 AE 1035
FP-AE-24 330 90 with 2 cut-outs 36 x 112 mm	43838	KEL 24 KEL-U 24 KEL-QTA 24	KEL-DPZ 24 KEL-DPU 24 KEL-DP 24	3	AE 1030 AE 1031 AE 1038 AE 1380
FP-AE-16 330 90 with 2 cut-outs 36 x 86 mm	43861	KEL 16 KEL-U 16		3	
FP-AE 339 149 with 2 cut-outs 36 x 112 mm	43840	KEL 24 KEL-U 24 KEL-SNAP 24 KEL-QTA 24	KEL-DPZ 24 KEL-DPU 24 KEL-DP 24	4	AE 1037 CS 9751.125 AE 1045 CS 9751.145 AE 1050 CS 9751.165 AE 1057 CS 9752.125 AE 1100 AE 1110 TP 6710 AE 1114 TP 6712 AE 1130 TP 6714 AE 1213 TP 6716 AE 1338 AE 1350
FP-AE 339 149 with 4 cut-outs 36 x 112 mm	43846	KEL 24 KEL-U 24 KEL-QTA 24	KEL-DPZ 24 KEL-DPU 24 KEL-DP 24	4	
FP-AE 534 149 with 4 cut-outs 36 x 86 mm	43871	KEL 16 KEL-U 16 KEL-SNAP 16		5	AE 1039 EL 1919 AE 1054 EL 1926 AE 1055 AE 1058 IN 1076.290 AE 1060 AE 1073 TP 6711 AE 1076 TP 6713 AE 1077 TP 6715 AE 1090 TP 6717 AE 1180 AE 1260 AE 1280 AE 1339 AE 1360 AE 1376 AE 1958
FP-AE 534 149 with 3 cut-outs 36 x 112 mm	43842	KEL 24 KEL-U 24 KEL-SNAP 24 KEL-QTA 24	KEL-DPZ 24 KEL-DPU 24 KEL-DP 24	5	
FP-AE 534 149 with 6 cut-outs 36 x 112 mm	43848	KEL 24 KEL-U 24 KEL-QTA 24	KEL-DPZ 24 KEL-DPU 24 KEL-DP 24	5	

FP-KL

Flanged Plates for Junction Boxes



Cable entry plate for Rittal KL:
KEL-DPZ-KL - see page 66

Description

Product Description

The FP flanged plates type KL, designed to fit the Rittal KL series junction boxes, are installed in combination with a cable entry system for either pre-terminated or standard cables. FP flanged plates are pre-cut, pre-drilled and painted for easy and quick installation of icotek cable routing products.

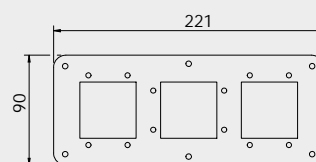
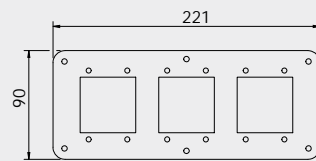
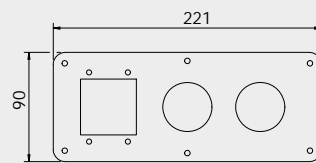
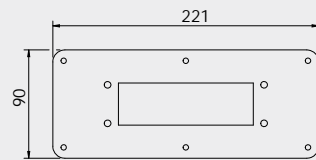
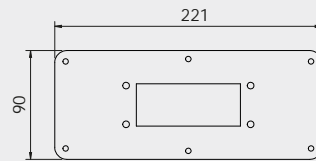
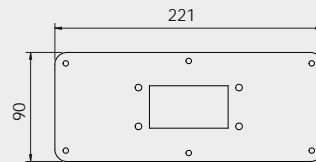
We recommend fastening the cable entry systems with a torque of 1.5 - 2.0 Nm.

Specifications

Material **Carbon steel, powder coated**

Compatible with

KEL Cable entry frames	18 - 21
KEL-U Cable entry frames	8 - 14
KEL-SNAP Mounting frames	36 - 37
KEL-QTA 24 Cable entry frames	54
KEL-DPU Cable entry plates	62 - 63
KEL-DPZ Cable entry plates	64 - 71
KEL-DP Cable entry plates	72
KEL-DPF Cable entry grommets	77
Blank plates	158 - 159



FP-KL

Flanged Plates for Junction Boxes



Type	Order No. RAL 7035	Flanged plates compatible with	Size FP	Compatible with (e.g. for Rittal)
FP-KL 221x90 10 with 1 cut-out 36 x 65 mm	43853	KEL 10 KEL-U 10 KEL-SNAP 10	2	Junction boxes Type KL
FP-KL 221x90 16 with 1 cut-out 36 x 86 mm	43855	KEL 16 KEL-U 16 KEL-SNAP 16	2	Junction boxes Type KL
FP-KL 221x90 24 with 1 cut-out 36 x 112 mm	43834	KEL 24 KEL-U 24 KEL-SNAP 24 KEL-QTA 24 KEL-DPZ 24 KEL-DPU 24 KEL-DP 24	2	Junction boxes Type KL
FP-KL 221x90 A with 3 cut-outs	43852	KEL-B KEL-U-B KEL-SNAP-B KEL-DPZ-B KEL-DPZ 40 KEL-DPF 40	2	Junction boxes Type KL
FP-KL 221x90 B with 3 cut-outs 46 x 46 mm	43854	Use with 2x KEL-SNAP-B and 1x KEL-DPZ-B	2	Junction boxes Type KL
FP-KL 221x90 C with 3 cut-outs 46 x 46 mm	43856	KEL-B KEL-U-B KEL-DPZ-B	2	Junction boxes Type KL

FP-BG

Flanged Plates for Bus Enclosures



Description

Product Description

The FP flanged plates type BG, designed to fit the Rittal BG series enclosures, have up to 3 cut-outs that match the dimensions of the standard cut-outs for the 24-pole industrial connectors. These flanged plates are installed in combination with a cable entry system for either pre-terminated cables (KEL 24 or KEL-U 24) or standard cables (KEL-DPZ 24, KEL-DPU 24 or KEL-DP 24).

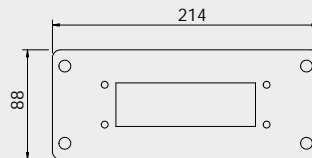
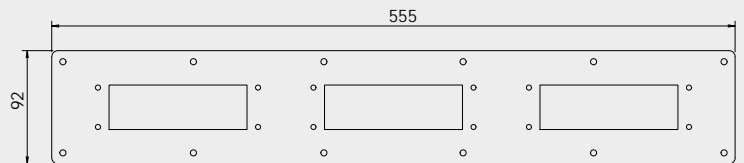
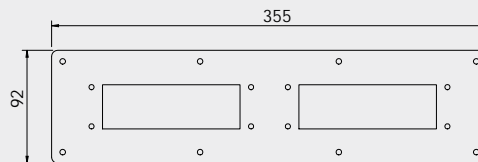
We recommend fastening the cable entry systems with a torque of 1.5 - 2.0 Nm.

Specifications

Material **Carbon steel, powder coated**

Compatible with

KEL 24 Cable entry frames	18
KEL-U 24 Cable entry frames	8
KEL-SNAP Mounting frames	36 - 37
KEL-QTA 24 Cable entry frames	54 - 55
KEL-DPU 24 Cable entry plates	62 - 63
KEL-DPZ 24 Cable entry plates	64 - 65
KEL-DP 24 Cable entry plates	72
Blank plates	158 - 159



FP-BG

Flanged Plates for Bus Enclosures



Type	Order No. RAL 7035	Flanged plates compatible with	Size FP.	Compatible with (e.g. for Rittal)
FP-BG 355x92 with 2 cut-outs 36 x 112 mm	43866	KEL 24 KEL-U 24 KEL-SNAP 24 KEL-QTA 24 KEL-DPZ 24 KEL-DPU 24 KEL-DP 24	-	BG 1558.510
FP-BG 555x92 with 3 cut-outs 36 x 112 mm	43865	KEL 24 KEL-U 24 KEL-SNAP 24 KEL-QTA 24 KEL-DPZ 24 KEL-DPU 24 KEL-DP 24	6	BG 1050.900 BG 1559.510 IN 1510.280
FP-FL 21 with 1 cut-out 36 x 112 mm	43832	KEL 24 KEL-U 24 KEL-SNAP 24 KEL-QTA 24 KEL-DPZ 24 KEL-DPU 24 KEL-DP 24	-	Fibox plates